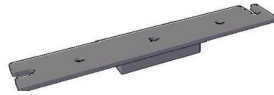


1. Ballest rail for ballasting

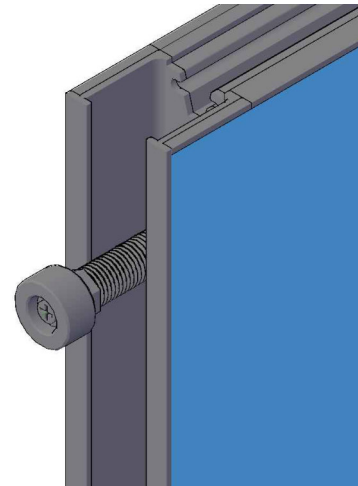
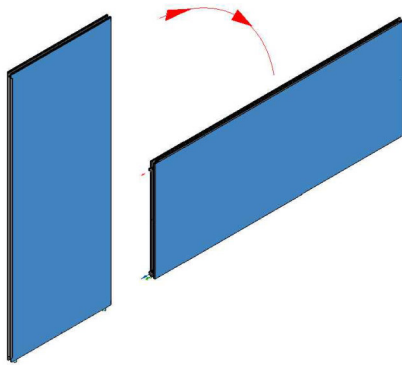
Order number: 8.100.180
Description: Ballest rail for balancing and increasing the stability of narrow cubes
Material: Stainless steel V2A rust free
Dimensions: 320 x 50 x 6 mm,
for 250mm wide walls with corner profiles, total external width B=330mm
All custom dimensions are produced on request.



2. Setting up the adjustable feet (Ord.Nr. 8.100.080) for ballasting

Make the adjustable feet accessible by placing the wall upright on it's edge

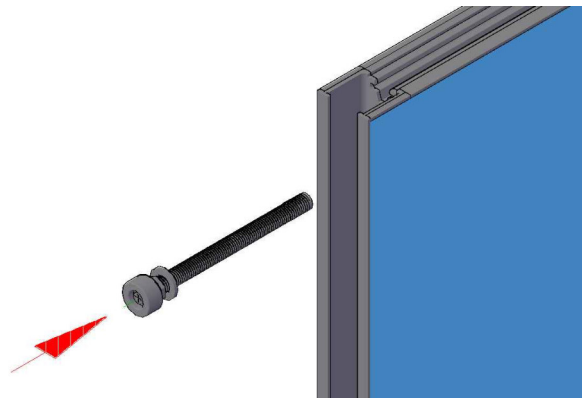
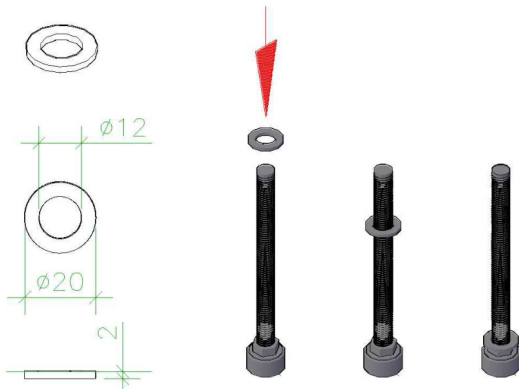
Unscrew adjustment feet with Phillips PZ 2 and cordless screwdriver or screwdriver



3. Placing the washer

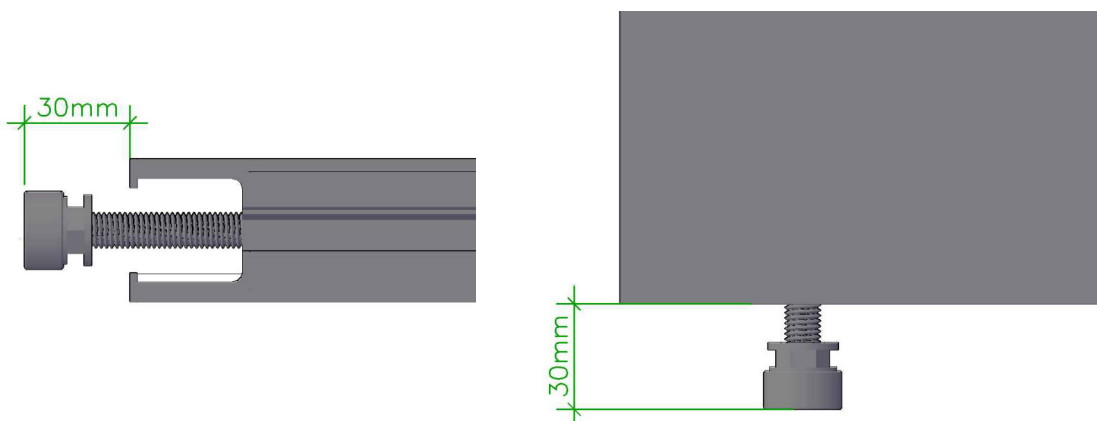
Place the washer on the adjustable foot

Screw in adjusting foot with washer



4. Adjusting the adjustable foot

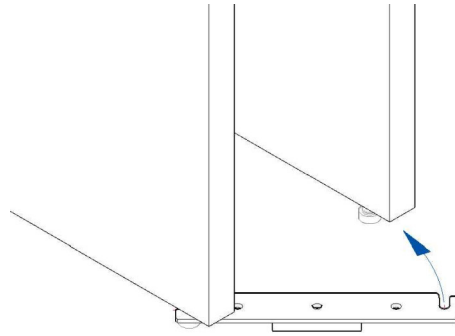
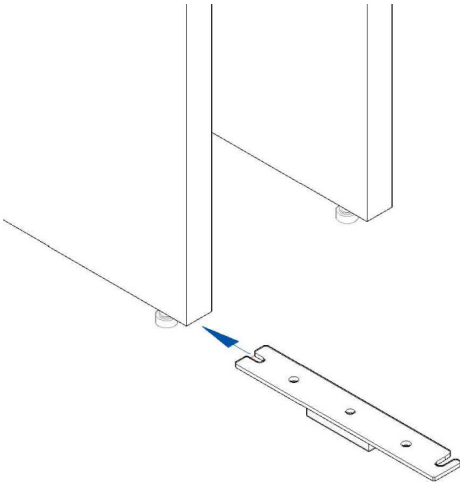
Adjust foot to a distance of 30 mm from the lower edge of the wall module, see figure



5. Mounting the ballast rail

Slide ballast rail with groove onto the prepared foot with washer (see previous sheet).

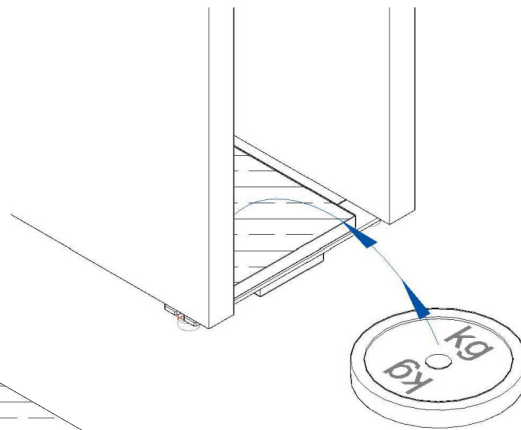
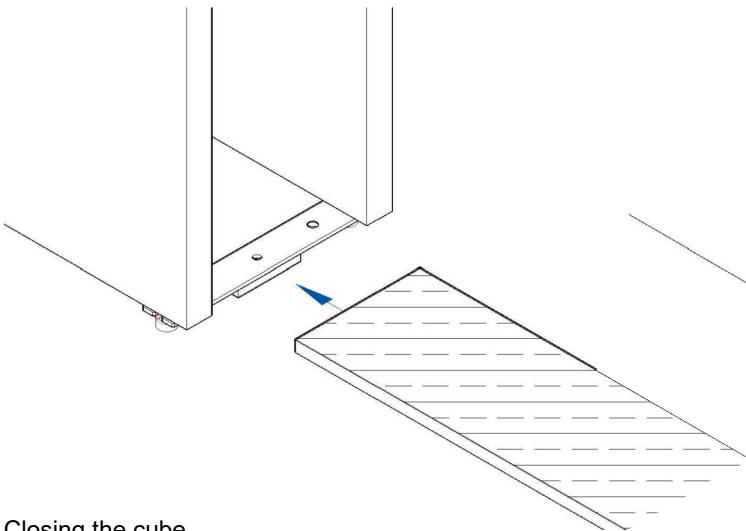
Rotate the ballast rail towards the opposite adjustable foot.



6. Ballancing

Place wooden board or similar object over 2 rails

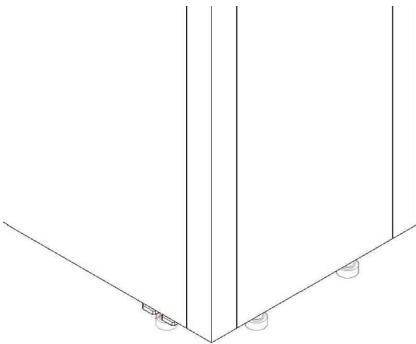
Place ballast load on board (stones, weights, sandbags, etc.)



7. Closing the cube

Mount corner profiles and wall modules

Mount end wall modules



← oder →

